



EMEA

# Frankfurt 3 Data Center

Well served with fresh air

The Frankfurt 3 Data Center is **ventilated with external air** and offers the best network connection, as it is located centrally in the **Rhine-Main region** in Rüsselsheim am Main, about 17 km from Frankfurt Airport.

## Data center space

- 28.300+m<sup>2</sup> of IT space
- Flexible colocation deployments
- Ancillary spaces available

## Power

- Total power: 90MVA
- IT load per building: 9 – 12MW
- Average power density of 2.5kW/m<sup>2</sup>
- Power supply at 110/20kV level
- Own substation with three 110/20kV transformers N+1
- Separate, dual UPS systems (A- and B-supply) with 2N redundancy
- Redundantly designed emergency power system with diesel generators

## Cooling

- High efficient chiller systems with free-cooling integrated or separated coolers and own-programmed, weather-dependent energy management systems
- CRAH units in the suites and technical rooms
- Concurrently maintainable air handling units (AHUs) providing fresh air

pressurization and humidity control to data suites

- Cold aisle containment
- Heat recovery with heating pumps

## Fire protection

- Automatic digital fire alarm system on all levels with point and air aspiration detectors
- Very Early Smoke Detection Alarm Systems (VESDA)
- Firefighting system based on a nitrogen extinguishing gas system
- Fire protection walls to a minimum of 90 minutes separation

## Security

- 24/7 Security Operations Center and Operation Control Center
- Palisade fencing
- Video surveillance systems for the external perimeter, plant areas, and data halls
- Ram-raid bollard protection in accordance to BS PAS 68:2013
- Card swipe entry/exit to all doors
- Preventive risk assessment

## Connectivity

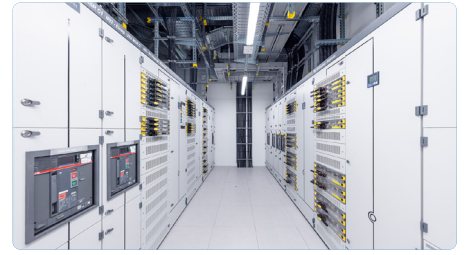
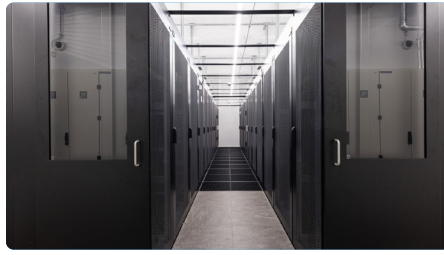
- Carrier-and cloud-neutral
- Carrier-Access-Rooms
- Carrier-Meet-Me-Rooms
- Carrier-mix
- Connectivity and dark fiber infrastructure
- Redundant cabling infrastructure
- Pre-Cabling
- High-performance internet access
- Inter data center connectivity between our data centers
- Multi Service Interconnection Platform

## Additional services

- Client implementation
- Installation services
- 24/7 Remote Hands services
- Facility services
- Additional security services

## Certifications

- Tier 3 - TIA 942/G
- ISO 27001 IT-GS (BSI)
- ISO 9001
- ISO 50001



- EN 50600 (building C, D, F and G)
- PCI DSS
- ISAE 3402 Type II

### Global data center network

- Part of the NTT family
- Connectivity options to our global network

### Service level agreement

- 99.999% power uptime availability
- Climate control conditions in line with ASHRAE guidelines
- Connectivity availability

### Address and contact

#### Frankfurt 3 Data Center

NTT Global Data Centers EMEA GmbH  
Karl-Landsteiner-Ring 4  
65428 Rüsselsheim am Main  
Germany

**T: +49 69 78 01-21 90**

**E: [dc.emea.sales@global.ntt](mailto:dc.emea.sales@global.ntt)**

### Locations

