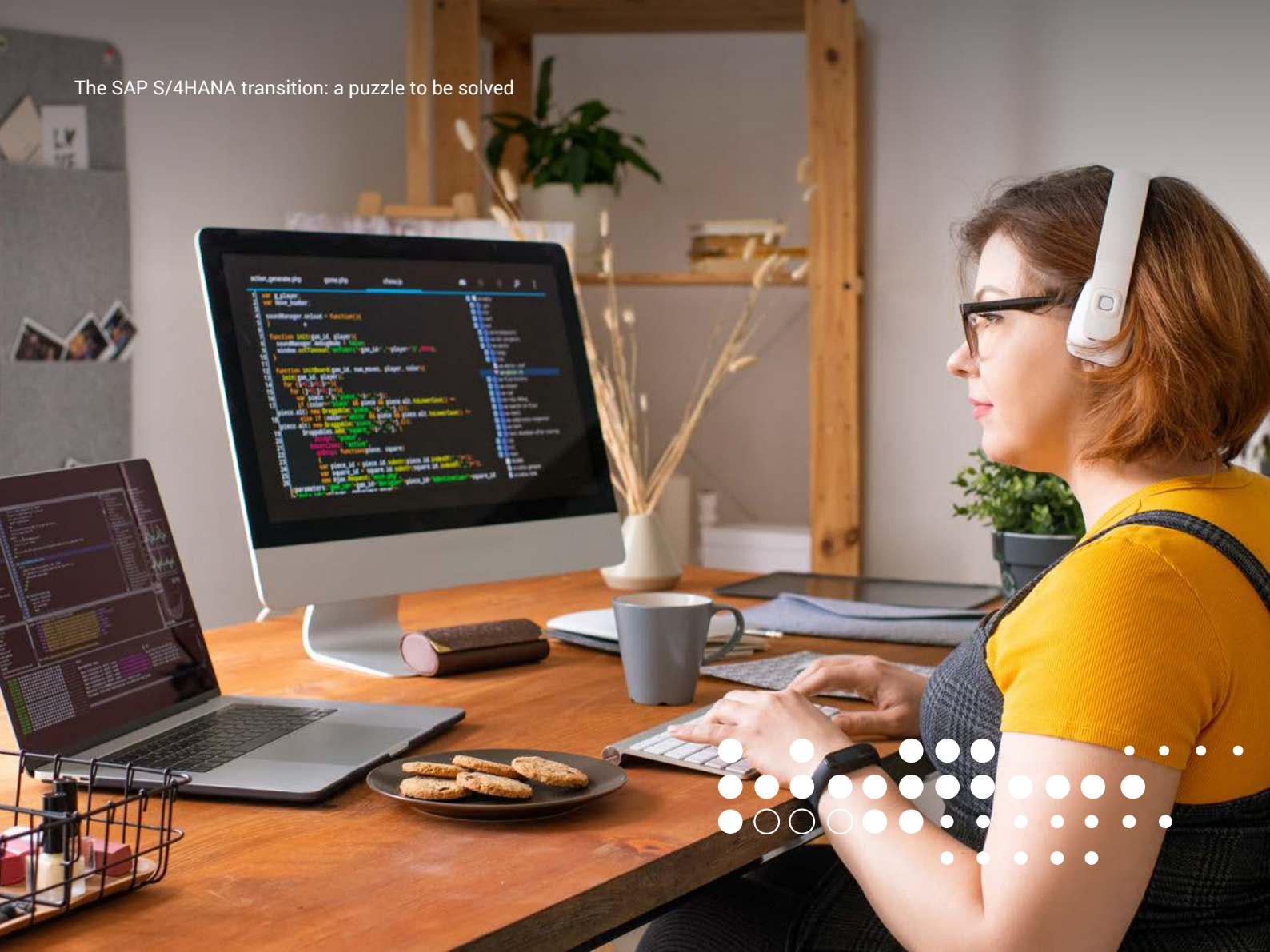




# The SAP S/4HANA transition

A puzzle to be solved





## The puzzle piece metaphor

In the world of SAP transitions, understanding the intricacies and nuances of the process is akin to solving a complex puzzle. Each piece represents a decision, a consideration, or an action. This ebook explores the metaphor of puzzle pieces as they apply to transitioning from SAP ECC to SAP S/4HANA.

## Identifying the puzzle pieces

Each transition involves numerous components, much like the diverse pieces of a puzzle. These range from technical elements like Unicode compatibility and custom code adaptation to strategic factors such as board approval and cost implications.

## Fitting the pieces together

Just like in a puzzle, these pieces need to fit together coherently for a successful transition. This involves understanding the interdependencies between different elements, such as the effect of business strategy on technical decisions or how the transition's cost might impact timelines.

## The sequence of placement

Assembling a puzzle requires a strategy, and the same holds true for SAP transitions. Some actions and decisions precede others. For instance, you first need to establish the reason for the transition and gain board approval before delving into the technicalities.

The SAP S/4HANA transition: a puzzle to be solved



### The cornerstone pieces:

#### Strategy and board approval

The first steps in any transition are defining the strategy and securing board approval. They form the cornerstones of the puzzle, providing a framework within which the other pieces fit.

### The border pieces

#### Cost and time implications

Cost and time implications frame the transition puzzle. They determine the boundaries within which the transition occurs, impacting decisions about resources, timelines, and the overall feasibility of the project.

### The central pieces

#### Technical considerations

The heart of the puzzle consists of technical considerations such as system readiness, data migration, and compatibility issues. These are the pieces that form the central image of the puzzle, bringing the transition to life.



### The puzzle of custom code adaptation

Adapting custom code for S/4HANA is a puzzle in itself. It requires understanding the intricacies of the new platform and how it interacts with existing systems and processes.

### The final pieces

#### Testing and deployment

The last pieces of the puzzle represent the final steps of testing and deployment. These pieces bring the image into focus, signifying a successful transition.

### The completed puzzle

#### The S/4HANA transition

Once all the pieces are in place, the transition puzzle is complete. The result is a well-planned, efficiently executed transition to S/4HANA that meets business objectives and positions the organization for future success.

### Mastering the puzzle of SAP S/4HANA transition

Understanding the puzzle pieces metaphor offers valuable insights into the SAP S/4HANA transition process. By identifying, fitting, and sequencing these pieces correctly, organizations can navigate their transitions more effectively, ensuring a smoother, more successful journey to S/4HANA.

The complexity of the puzzle underscores the need for thorough planning, clear communication, and a robust transition strategy. **By appreciating the interconnectedness of the puzzle pieces, organizations can better manage the challenges and opportunities presented by the transition to S/4HANA.**

